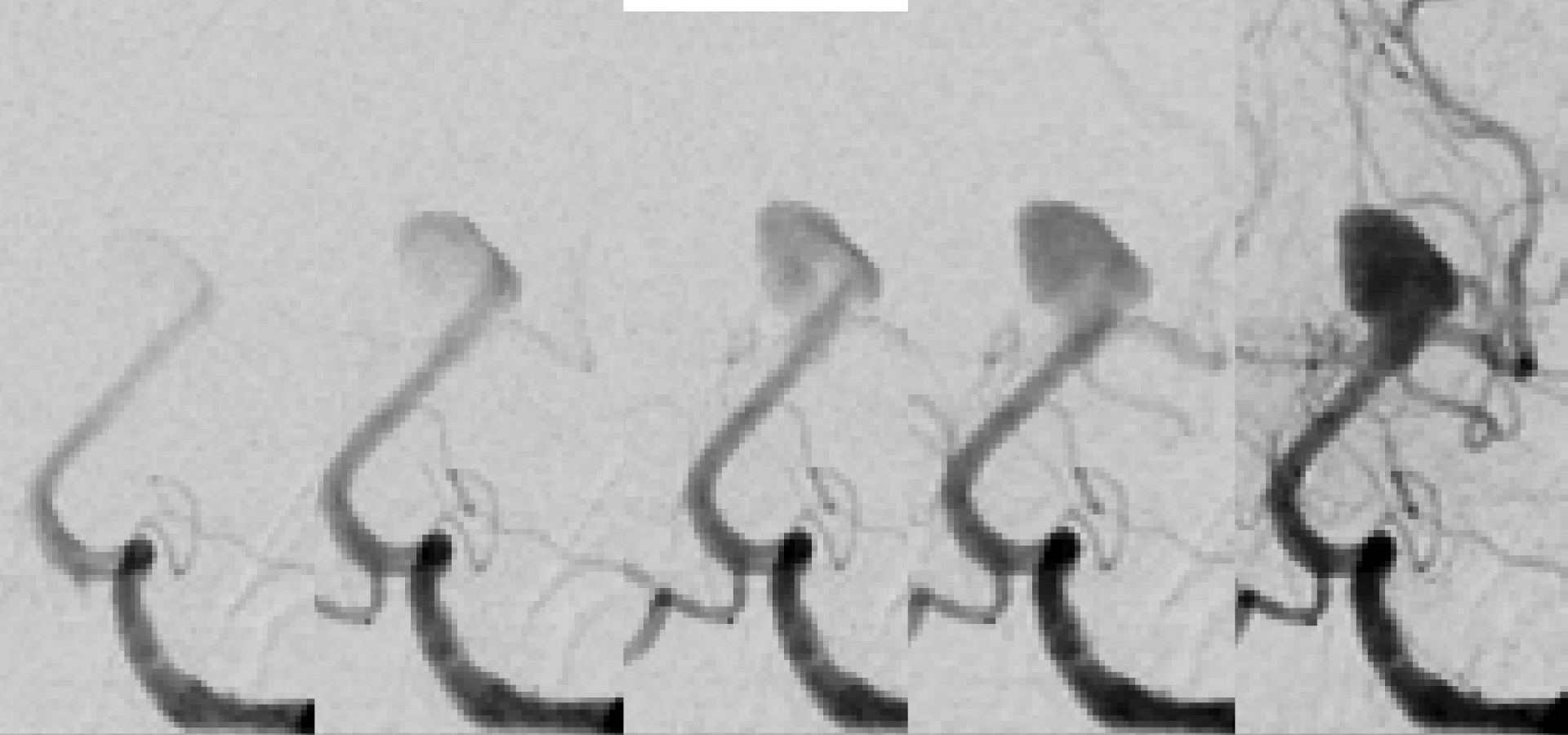
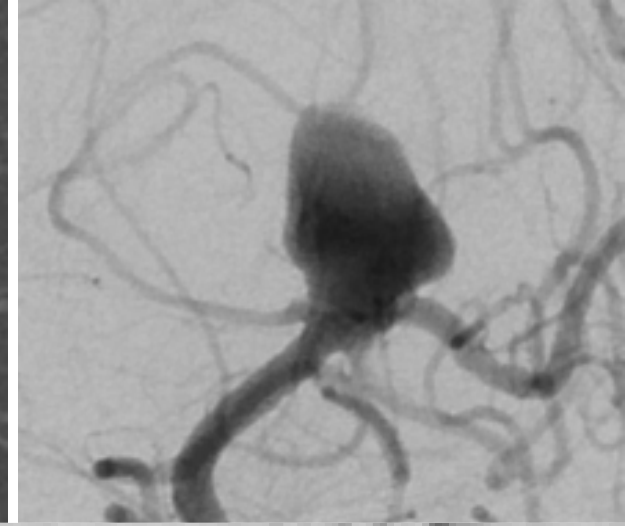
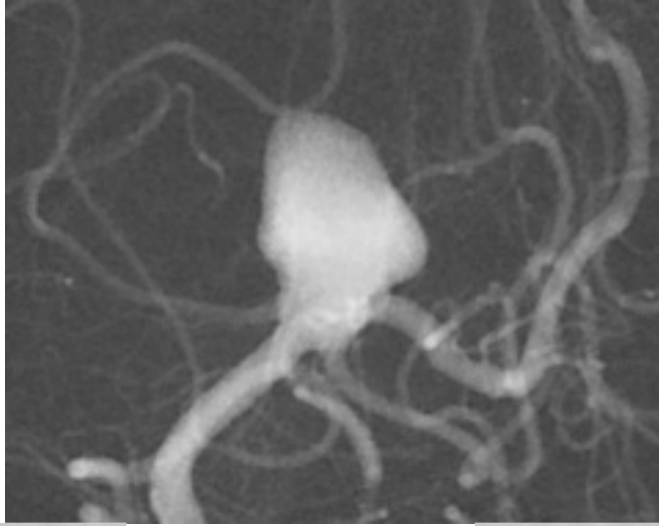


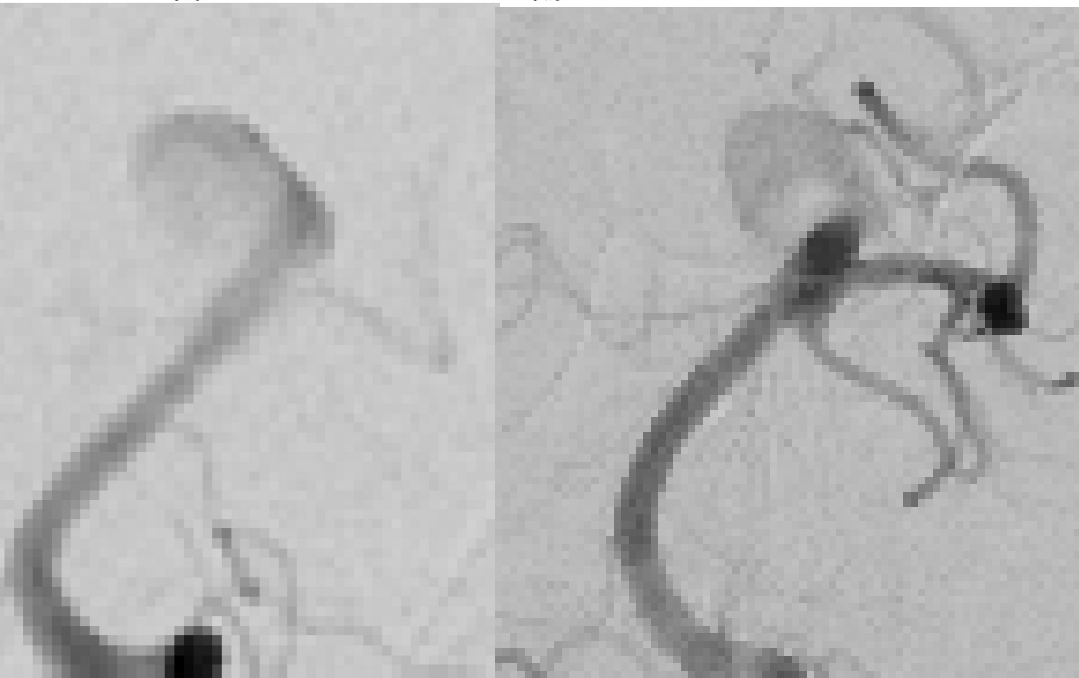
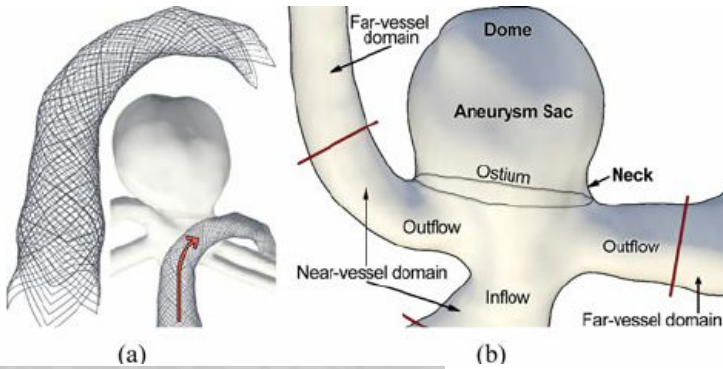
# ANEURISMA DEL TOP BASILAR-TRATAMIENTO CON FLOW DIVERTER

CEFALEAS MUY INTENSAS.  
HALLAZGO INCIDENTAL EN RM  
CRANEAL.  
TRATAMIENTO CON FLOW  
DIVERTER



# Surpass Flow Diverter for Treatment of Posterior Circulation Aneurysms

C.A. Taschner, S. Vedantham, J. de Vries, A. Biondi, J. Boogaarts, N. Sakai, P. Lytyk, I. Szikora, S. Meckel, H. Urbach, P. Kan, R. Siekmann, J. Bernardy, M.J. Gounis, and A.K. Wakhloo



## Update on flow diverters for the endovascular management of cerebral aneurysms

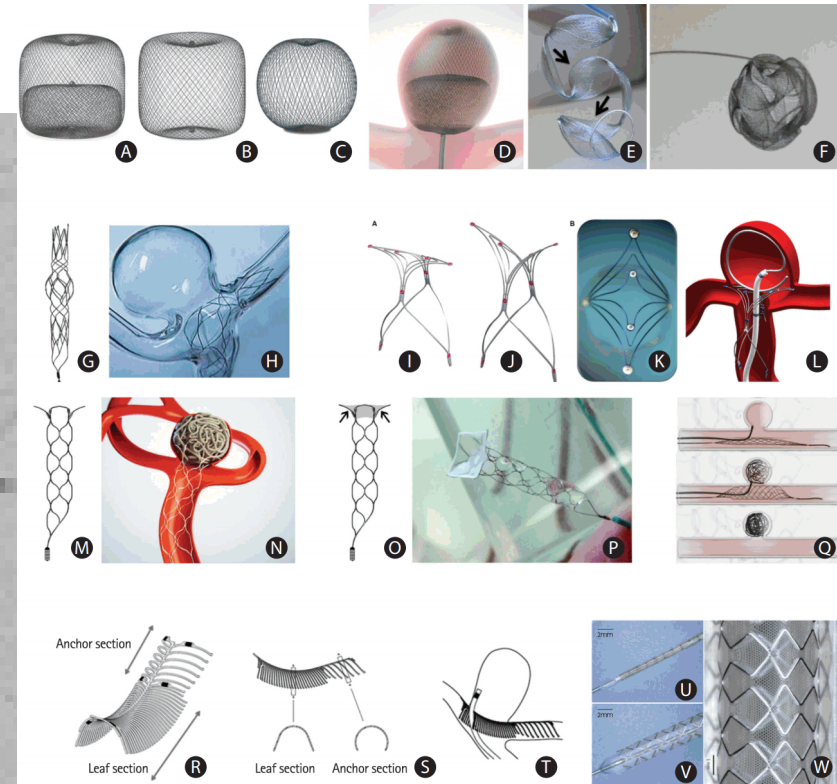
Gary Rajah, MD, Sandra Narayanan, MD, and Leonardo Rangel-Castilla, MD

Department of Neurosurgery, Wayne State University School of Medicine, Detroit, Michigan

Flow diversion has become a well-accepted option for the treatment of cerebral aneurysms. Given the significant treatment effect of flow diverters, numerous options have emerged since the initial Pipeline embolization device studies. In this review, the authors describe the available flow diverters, both endoluminal and intrasaccular, addressing nuances of device design and function and presenting data on complications and outcomes, where available. They also discuss possible future directions of flow diversion.

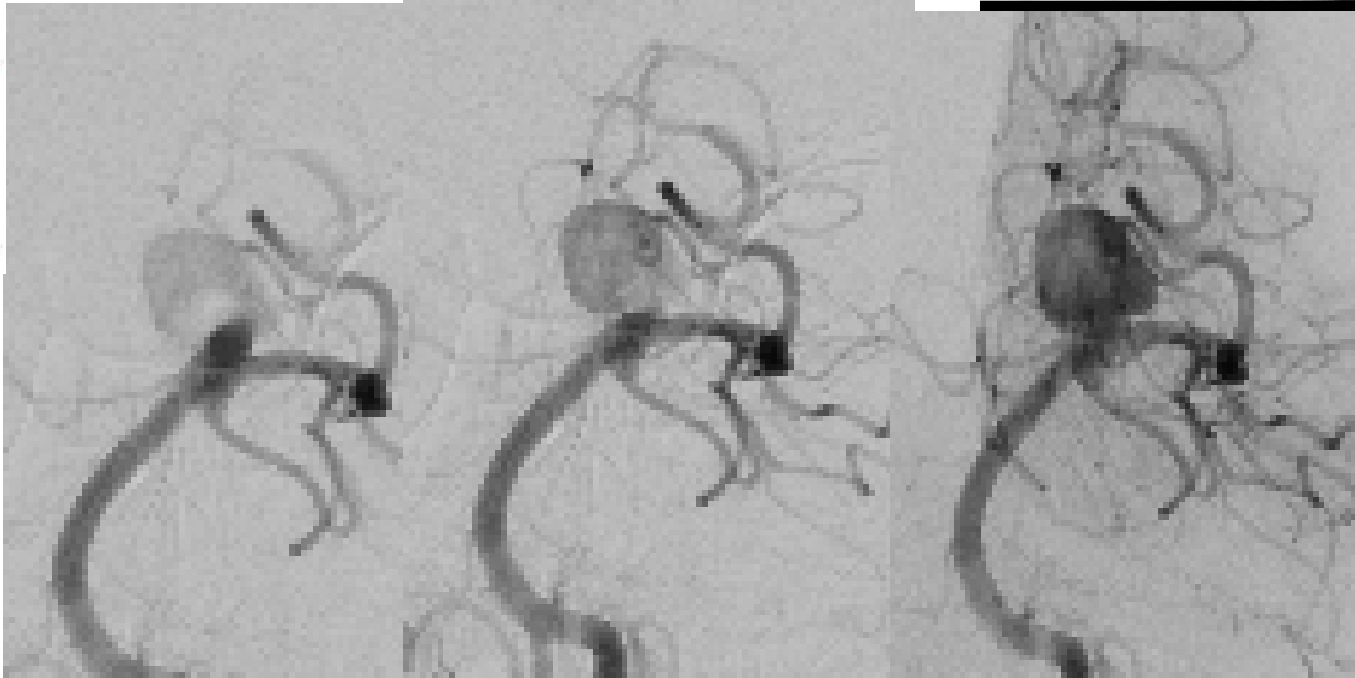
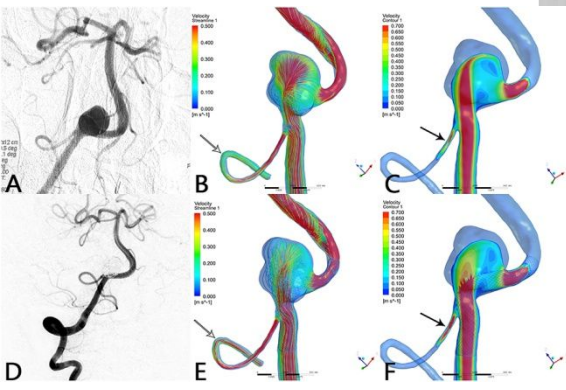
<https://thejns.org/doi/abs/10.3171/2017.3.FOCUS16427>

**KEY WORDS** intracranial aneurysm; flow diversion; Pipeline embolization device; SILK flow diverter; Surpass flow diverter; FRED; WEB; Medina; LUNA AES; p64



# ANEURISMA DEL TOP BASILAR-TRATAMIENTO CON FLOW DIVERTER

ARTERIOGRAFÍA CEREBRAL.  
PRE TRATAMIENTO  
VALORACIÓN DEL INFLOW  
POST TRATAMIENTO



# ANEURISMA DEL TOP BASILAR- TRATAMIENTO CON FLOW DIVERTER

STENT SURPASS 4 MM  
X 20 MM

Surpass™ Streamline  
(Stryker)

Cobalt-chromium with 30% metal coverage. Can be repositioned both proximally and distally.

